

results NIOSH - sample 1

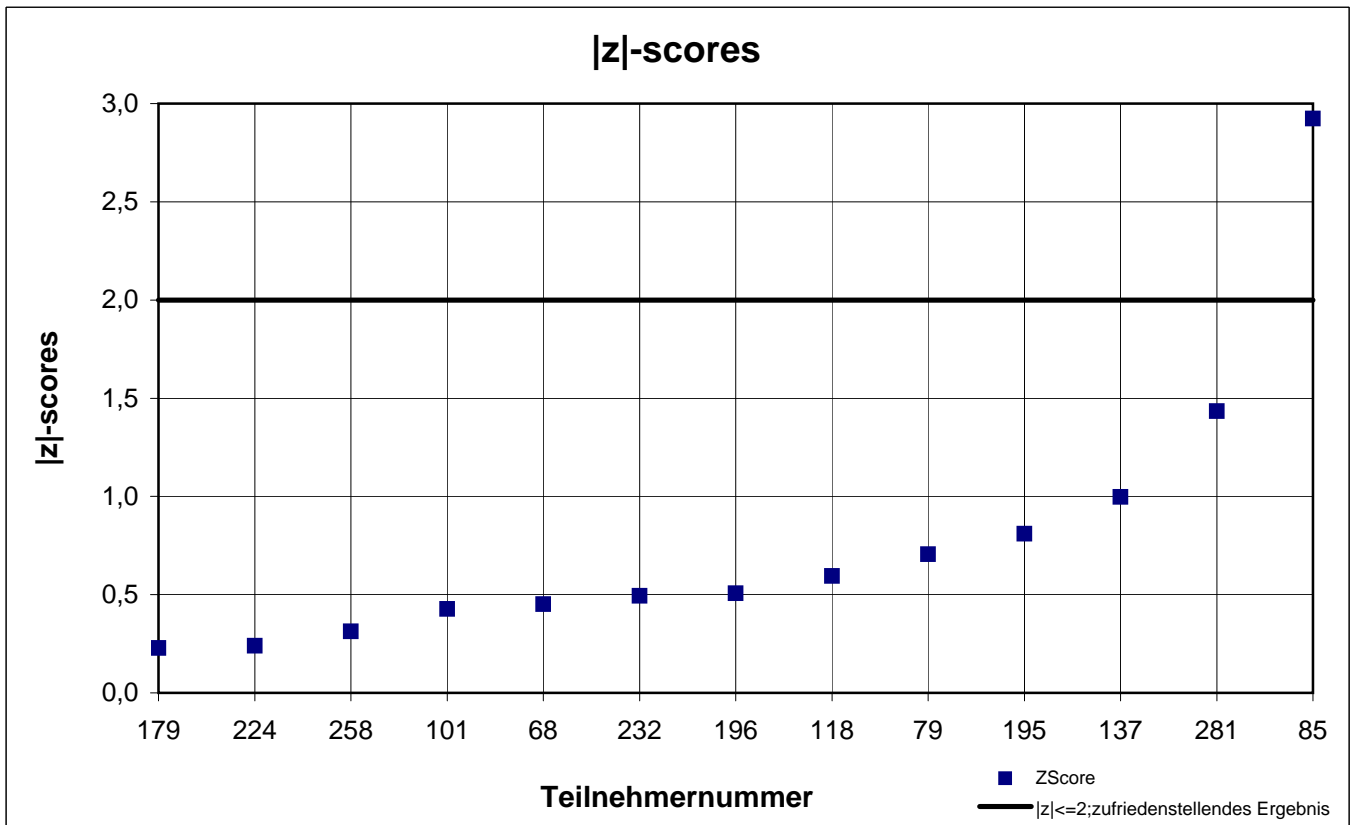
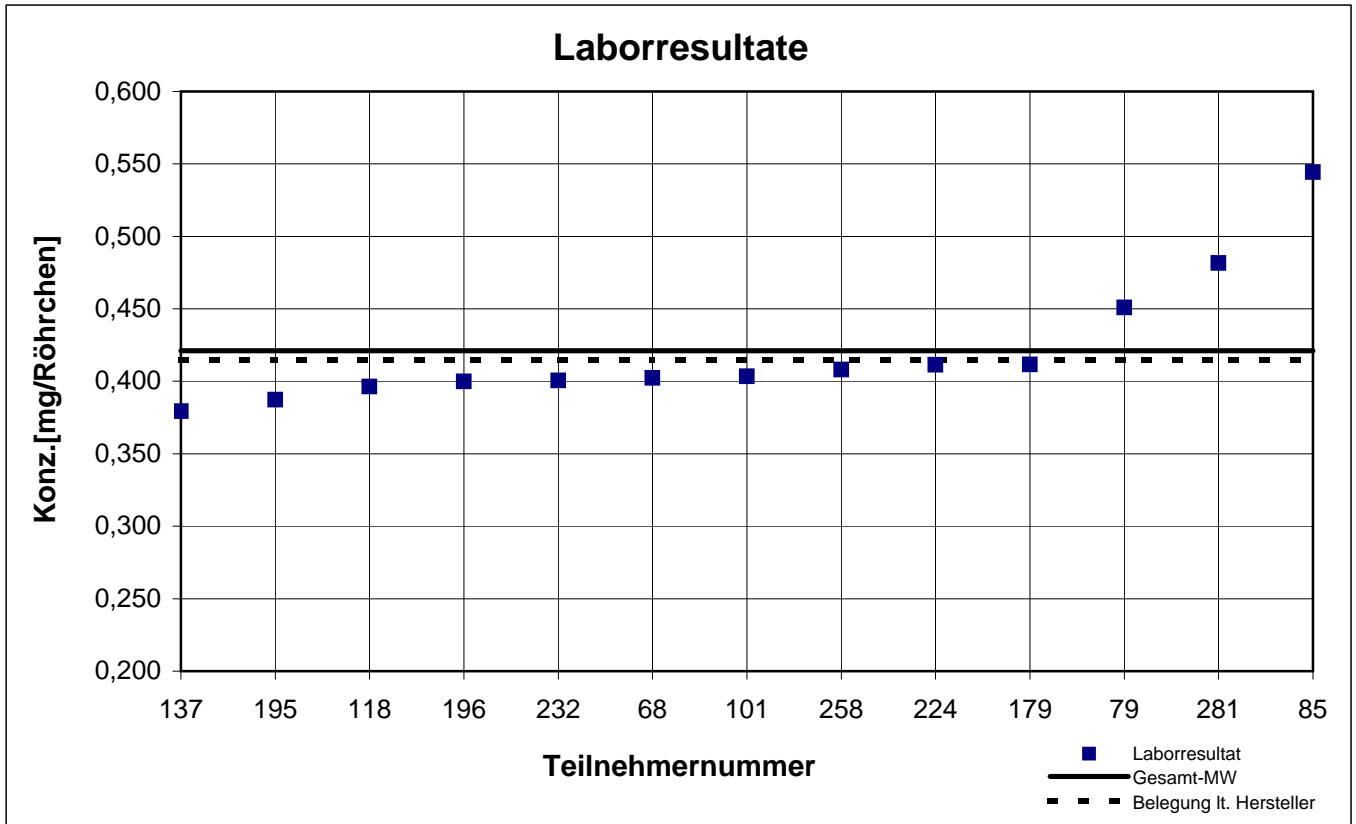
participant number	n-hexane		n-octane		trichlorethene	
	result [mg/tube]	z - score	result [mg/tube]	z - score	result [mg/tube]	z - score
68	0,402	0,4	0,892	0,2	0,370	0,0
79	0,451	0,7	0,967	1,1	k.A.	k.A.
85	0,544	2,9	1,328	5,2	k.A.	k.A.
101	0,403	0,4	0,858	0,2	0,364	0,2
118	0,396	0,6	0,887	0,1	0,364	0,2
137	0,379	1,0	0,915	0,5	0,410	1,1
179	0,412	0,2	0,940	0,7	0,410	1,0
195	0,387	0,8	0,758	1,3	0,309	1,7
196	0,400	0,5	0,858	0,2	0,367	0,1
224	0,411	0,2	0,927	0,6	0,368	0,1
232	0,401	0,5	0,880	0,1	0,360	0,3
258	0,408	0,3	0,692	2,1	0,388	0,5
281	0,482	1,4	0,920	0,5	k.A.	k.A.

 marked fields are outliers!

	n-hexane	n-octane	trichlor ethene
mean c_k [mg / tube]	0,421	0,875	0,371
standard deviation S_k [mg / tube]	0,0460	0,0780	0,0286
relative standard deviation [%]	10,87	8,94	7,71

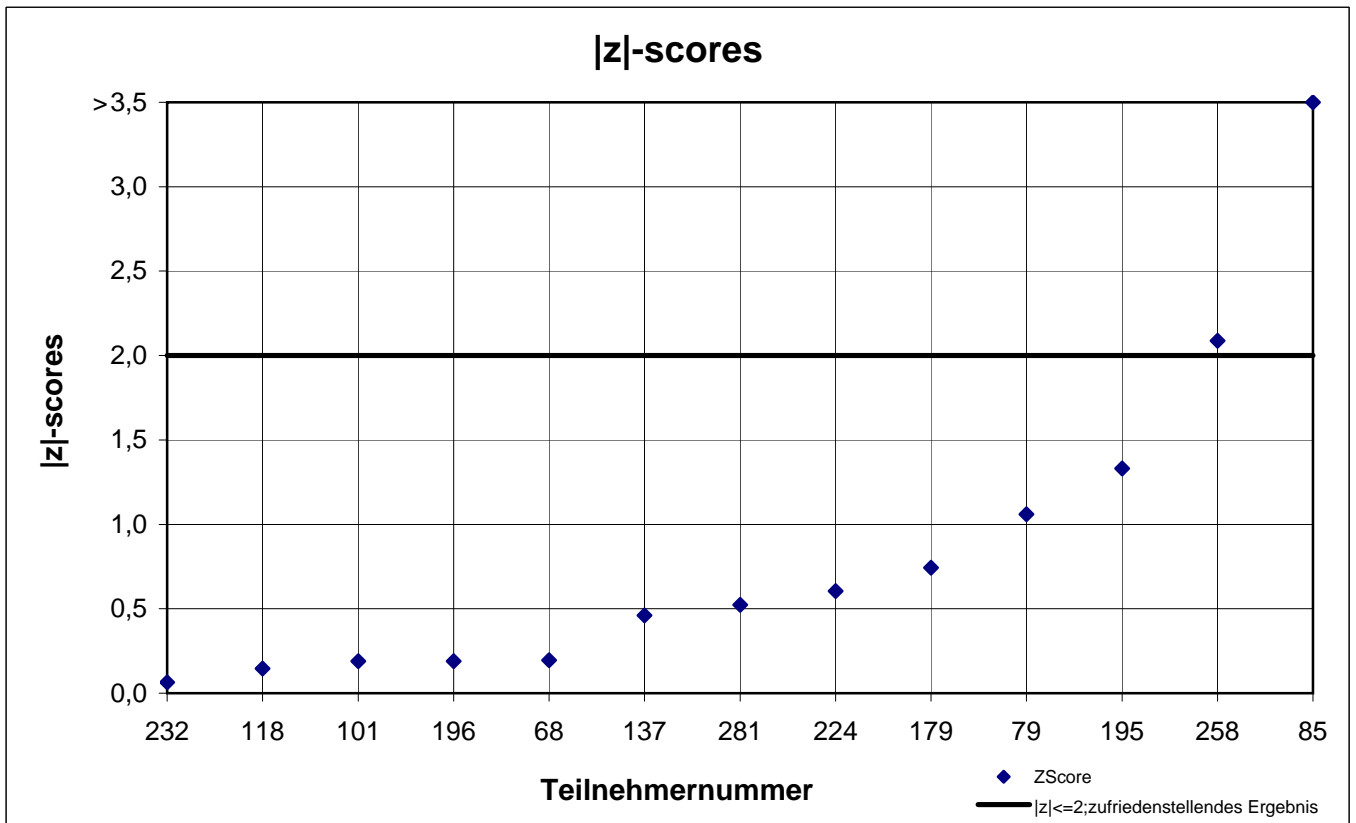
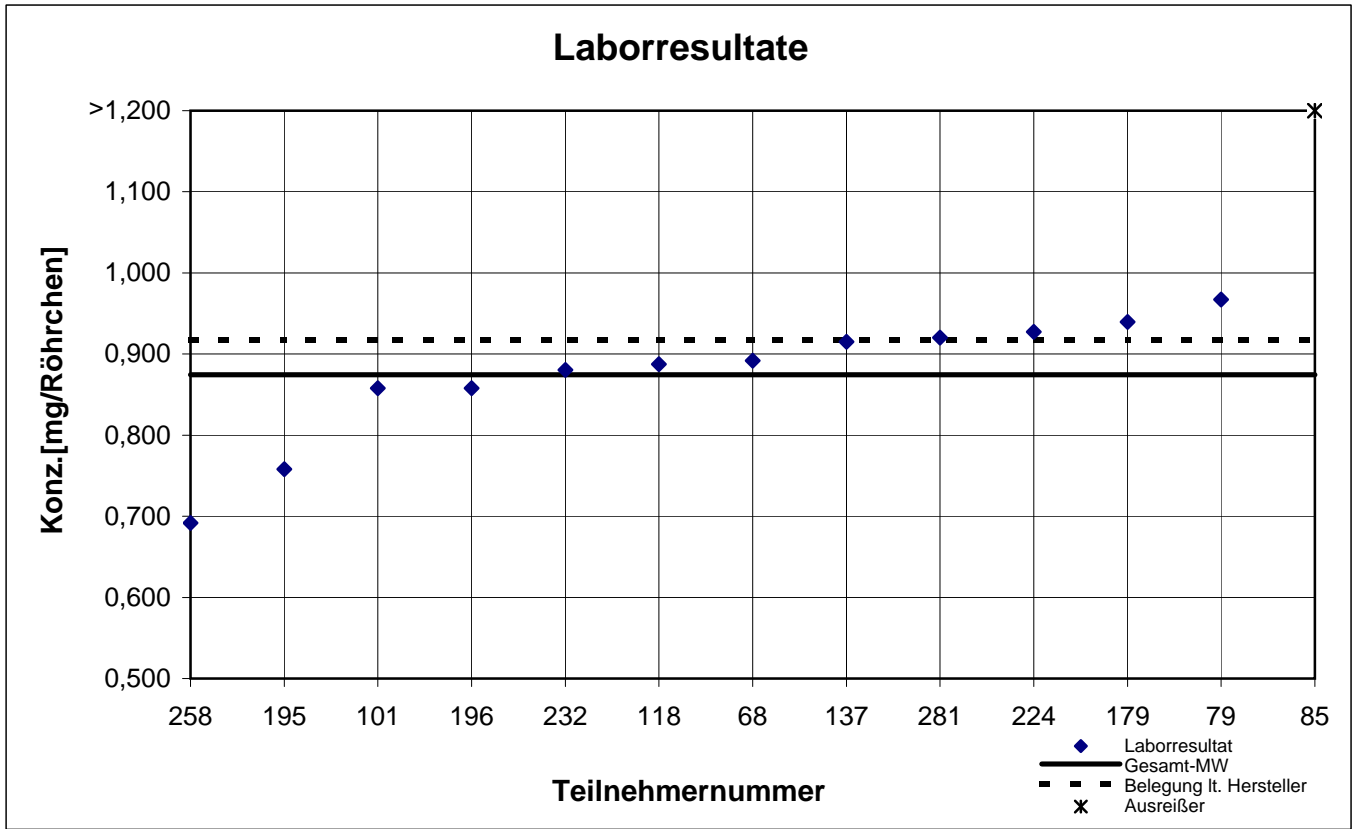
NIOSH -Probe 1

n-Hexan



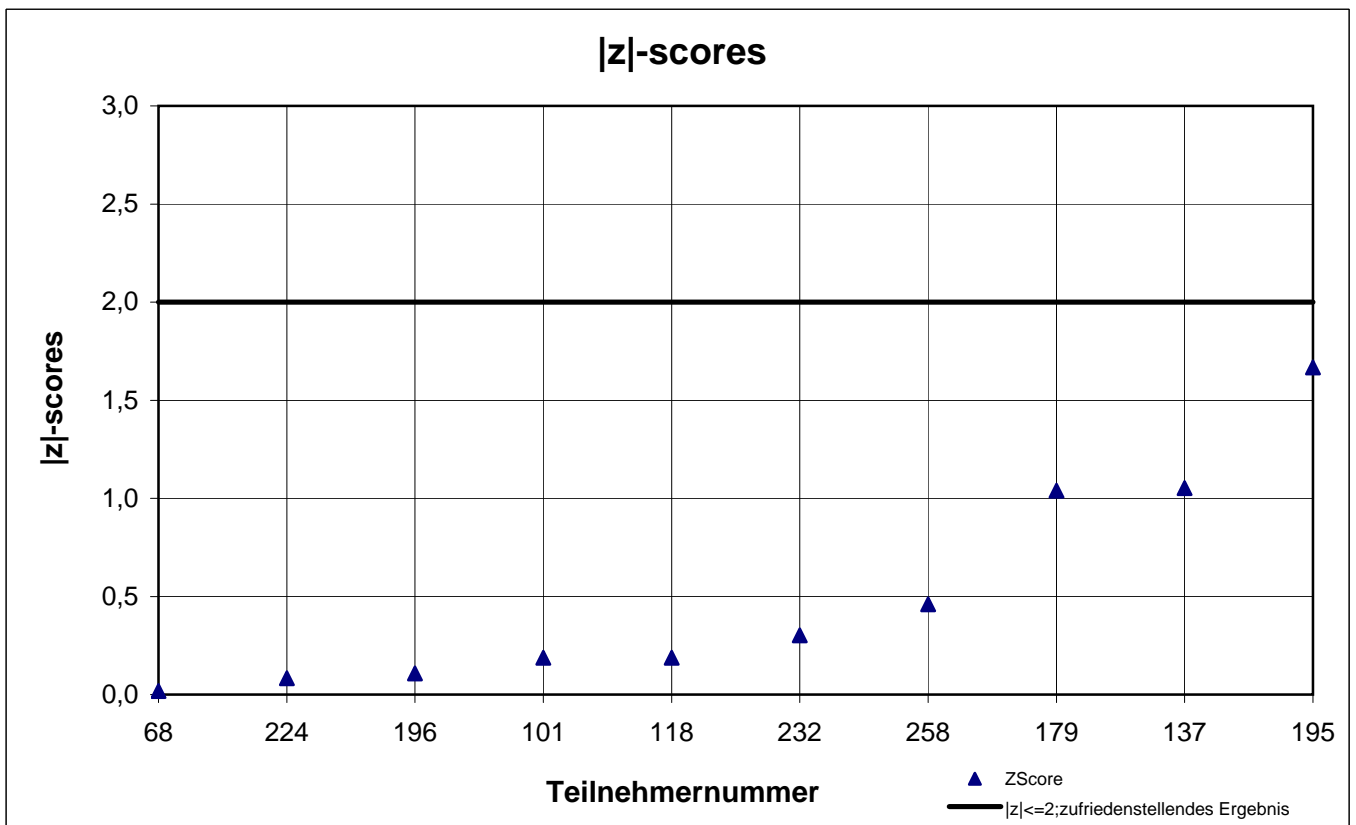
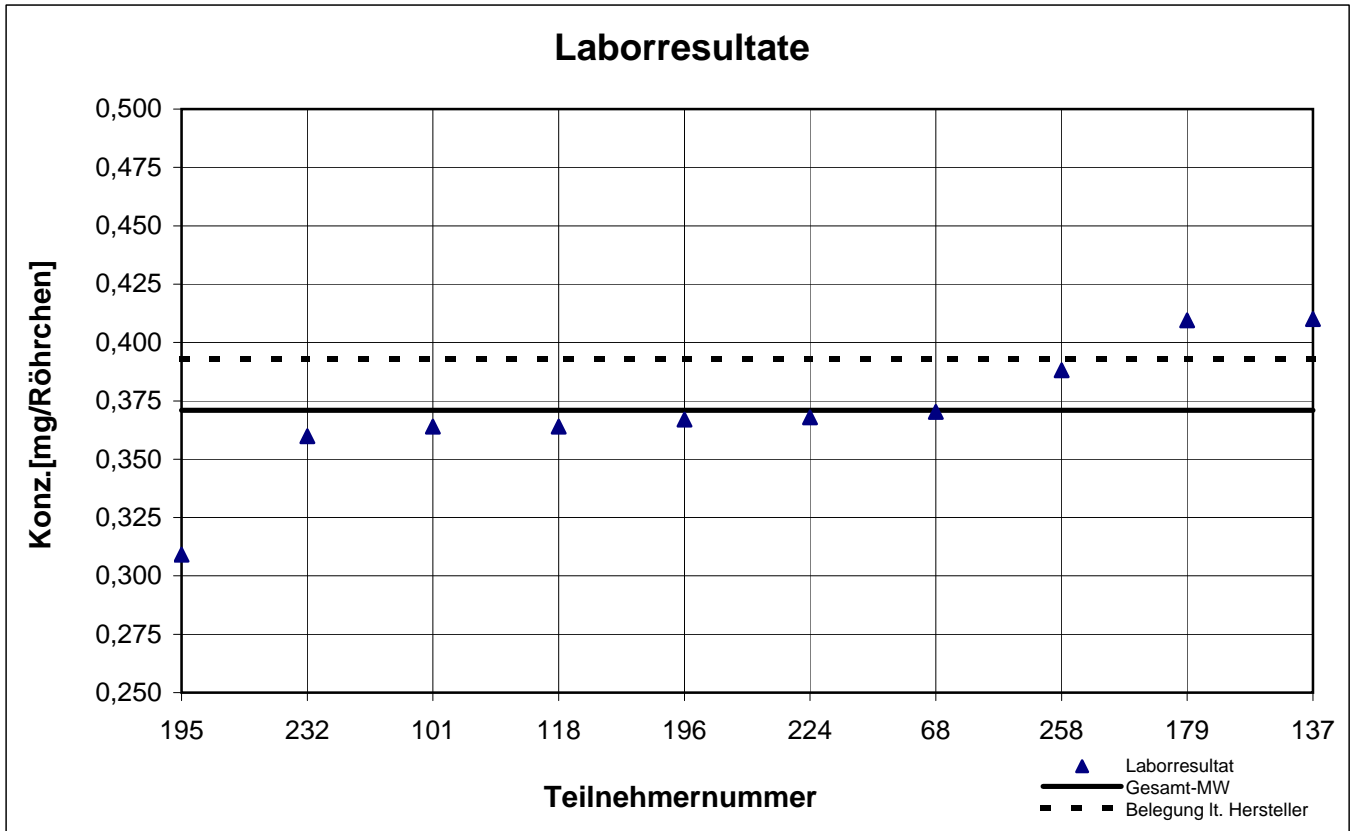
NIOSH -Probe 1

n-Oktan



NIOSH -Probe 1

Trichlorethen



results NIOSH - sample 2

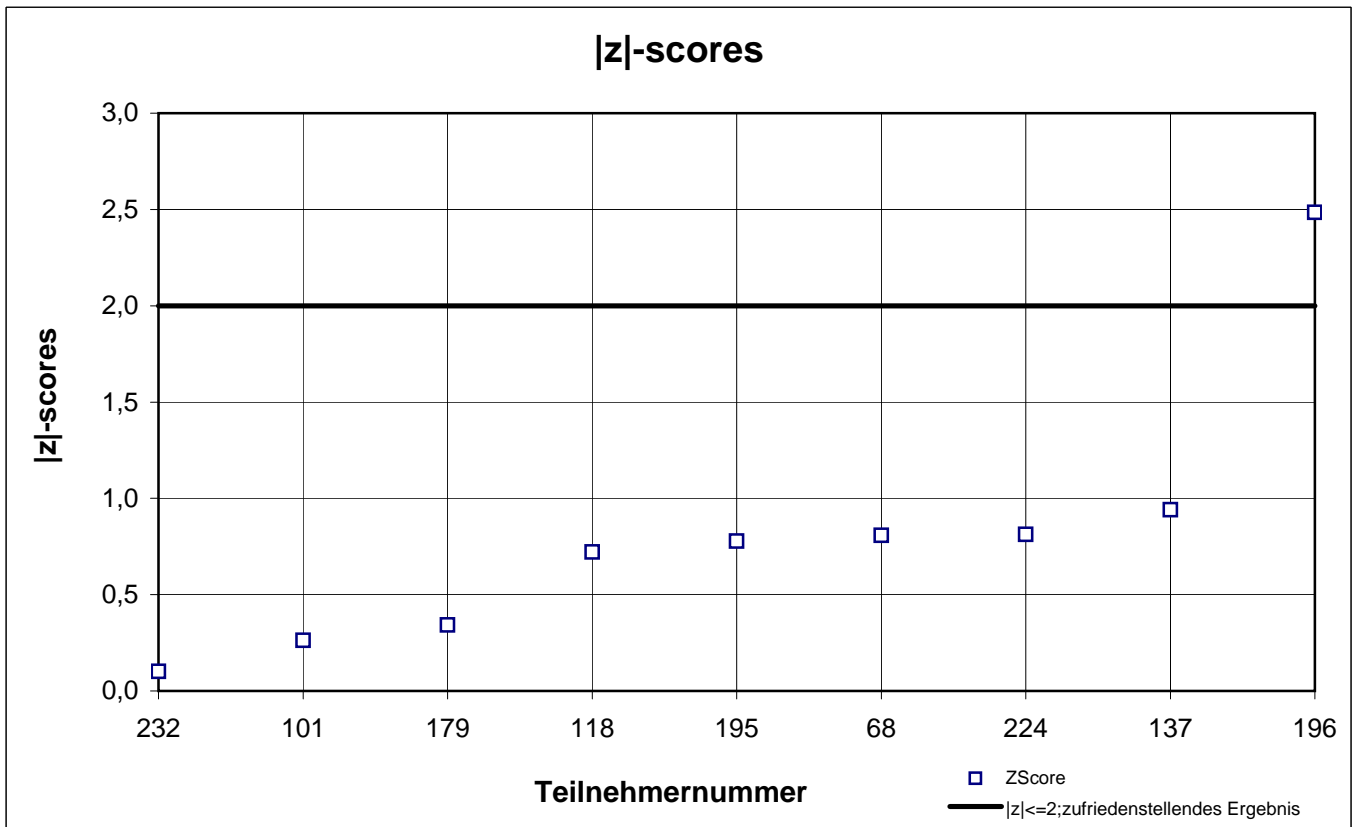
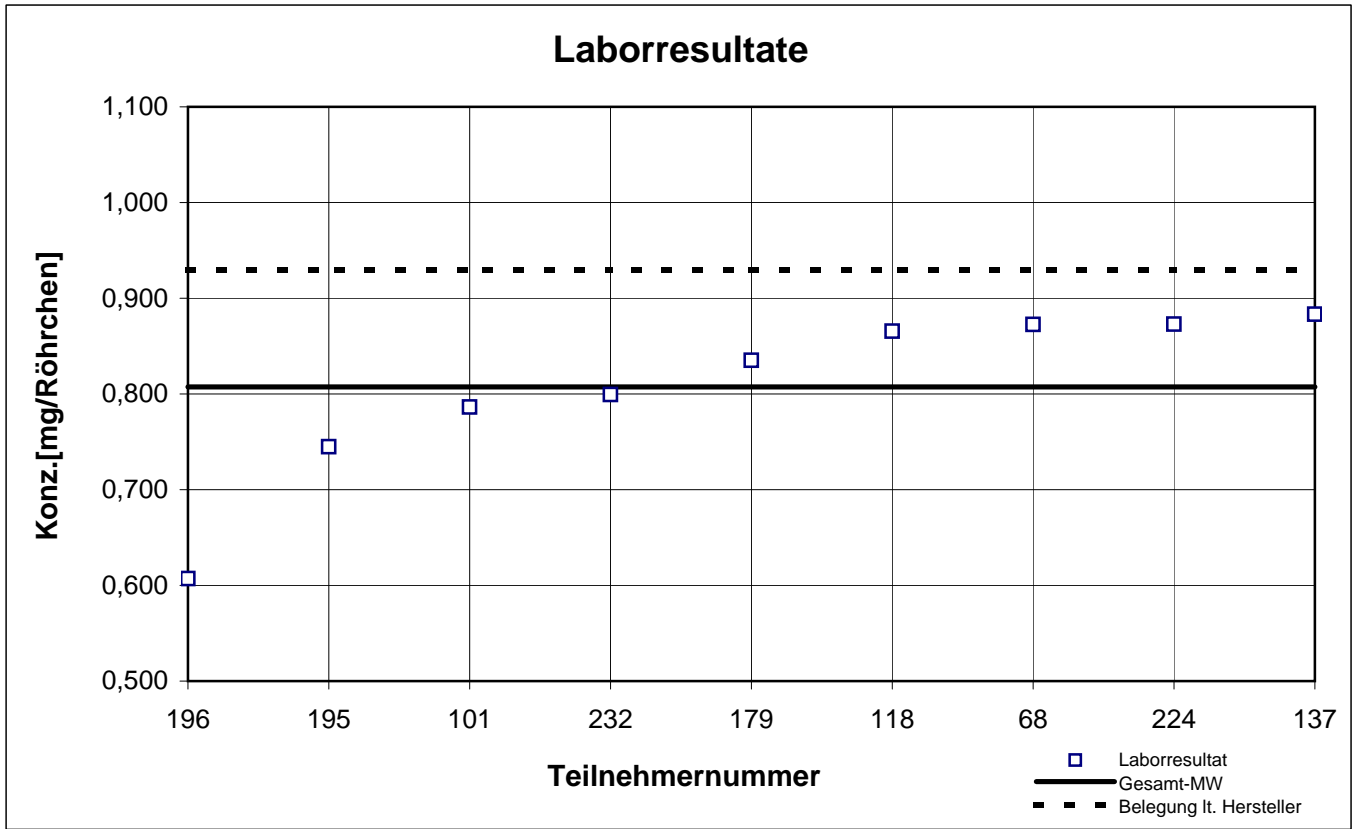
participant number	1,1,1-trichlor ethane		ethylbenzene		n-octane		o-xylene	
	result [mg/tube]	z - score	result [mg/tube]	z - score	result [mg/tube]	z - score	result [mg/tube]	z - score
68	0,873	0,8	0,280	0,2	0,571	0,2	0,323	0,1
79	k.A.	k.A.	0,276	0,0	0,582	0,4	0,339	0,6
85	k.A.	k.A.	0,471	7,1	0,801	4,3	0,508	5,9
101	0,786	0,3	0,269	0,2	0,565	0,1	0,314	0,2
118	0,866	0,7	0,283	0,3	0,587	0,5	0,331	0,3
137	0,883	0,9	0,274	0,0	0,554	0,1	0,313	0,2
179	0,835	0,3	0,268	0,3	0,551	0,2	0,316	0,1
195	0,745	0,8	0,254	0,8	0,520	0,7	0,270	1,6
196	0,607	2,5	0,048	8,3	0,114	8,0	0,055	8,3
224	0,873	0,8	0,271	0,2	0,595	0,6	0,322	0,1
232	0,799	0,1	0,259	0,6	0,540	0,4	0,308	0,4
258	k.A.	k.A.	0,281	0,2	0,582	0,4	0,341	0,7
281	k.A.	k.A.	0,309	1,2	0,506	1,0	0,348	0,9

 marked fields are outliers!

	1,1,1-trichlor ethane	ethyl benzene	o-octane	o-xylene
mean c_k [mg / tube]	0,807	0,275	0,559	0,320
standard deviation S_k [mg / tube]	0,0890	0,0140	0,0286	0,0210
relative standard deviation [%]	11,00	5,25	5,11	6,60

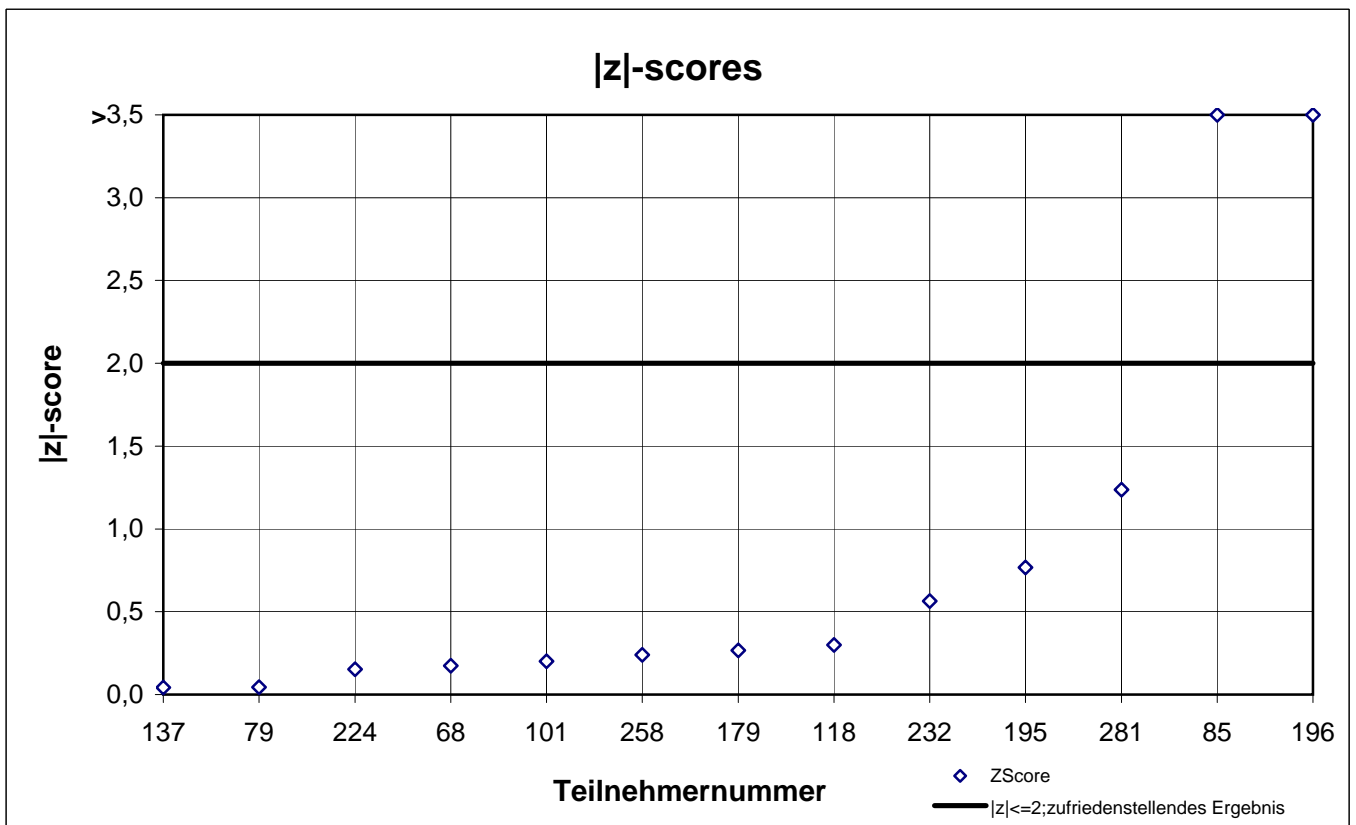
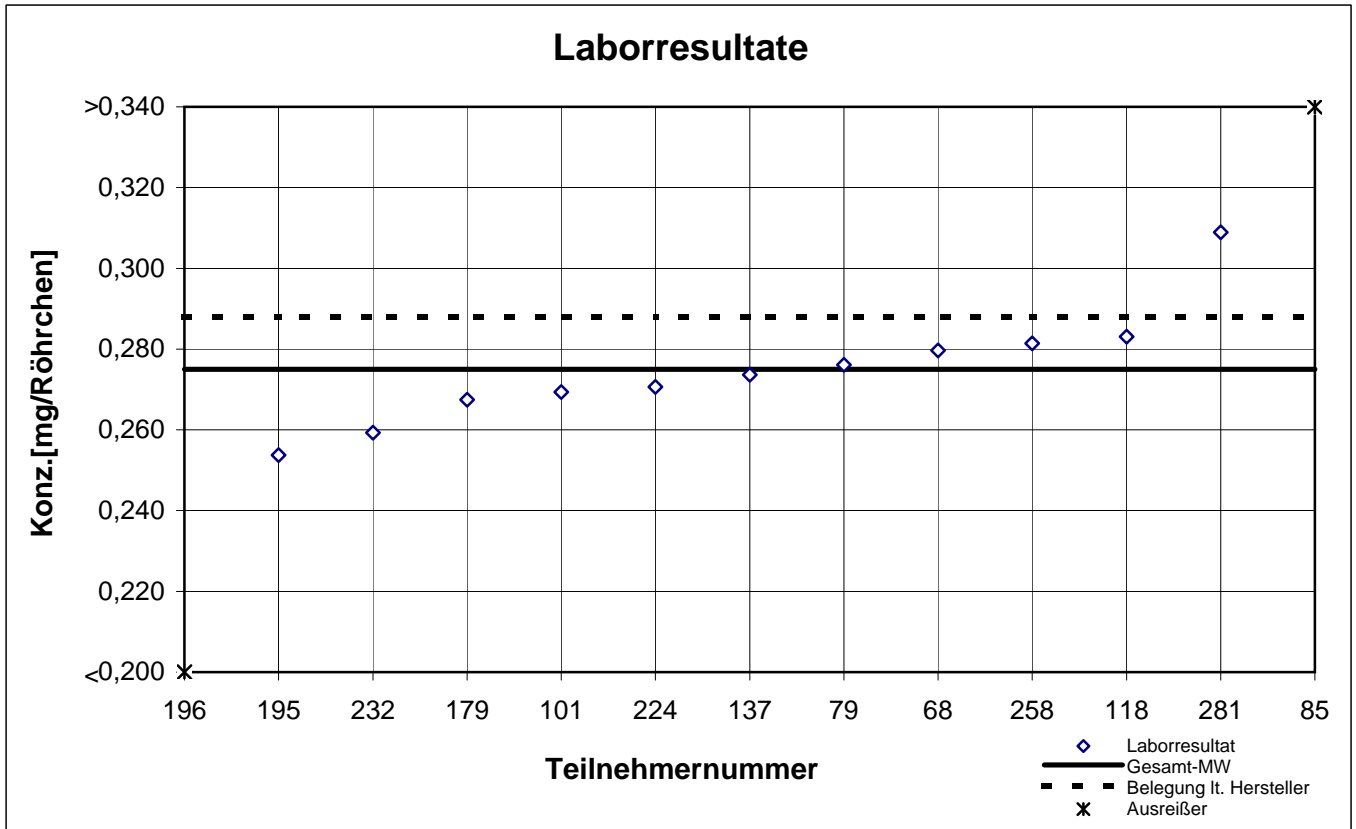
NIOSH -Probe 2

1,1,1-Trichlorethan



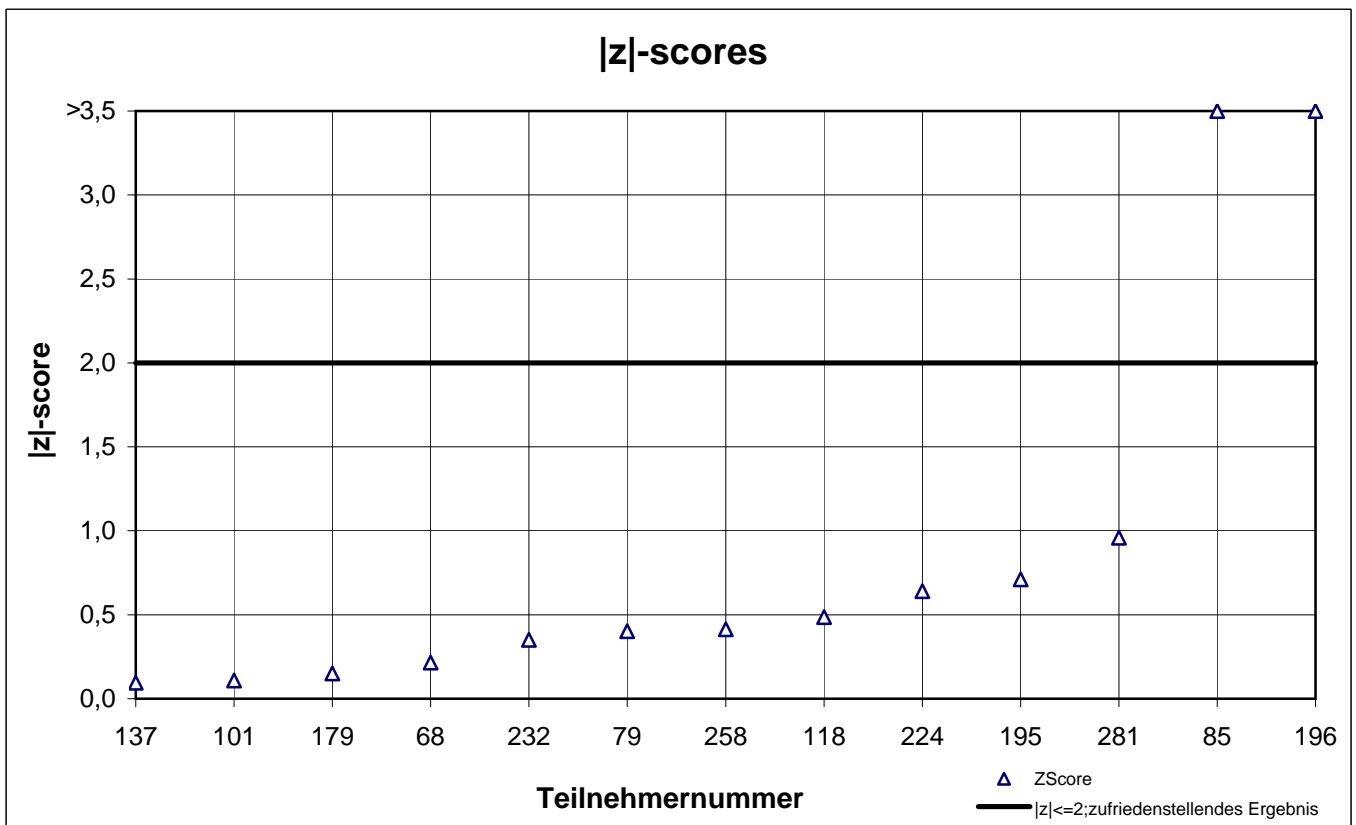
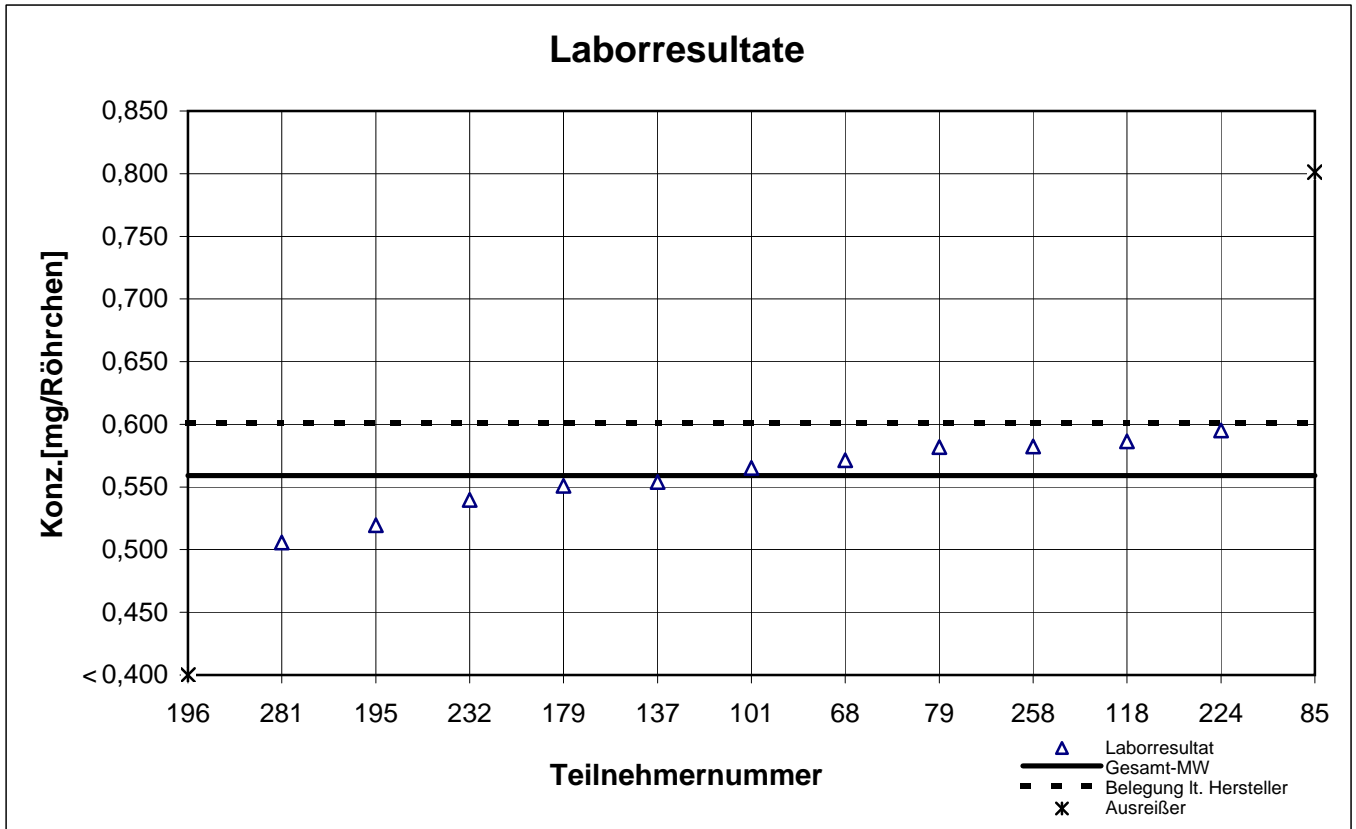
NIOSH -Probe 2

Ethylbenzol



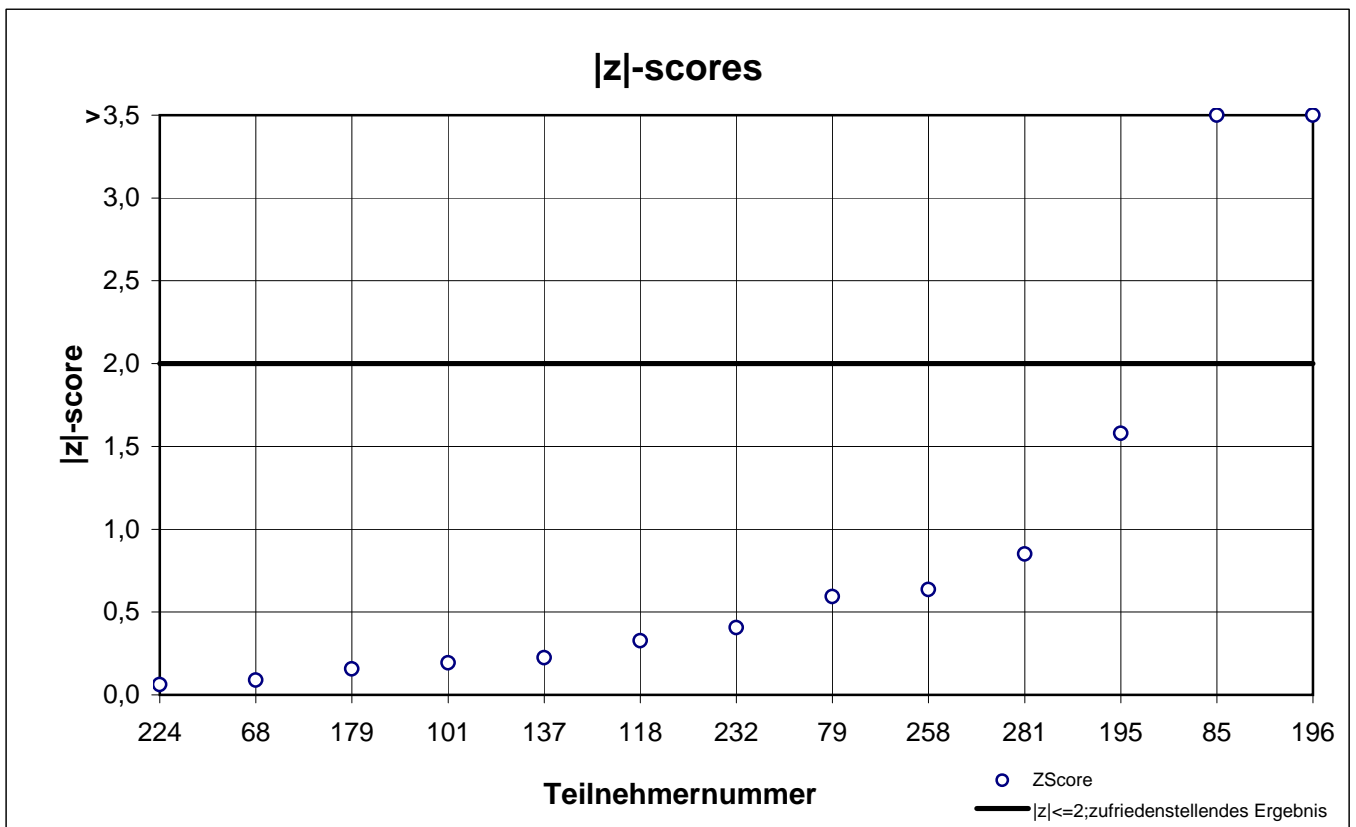
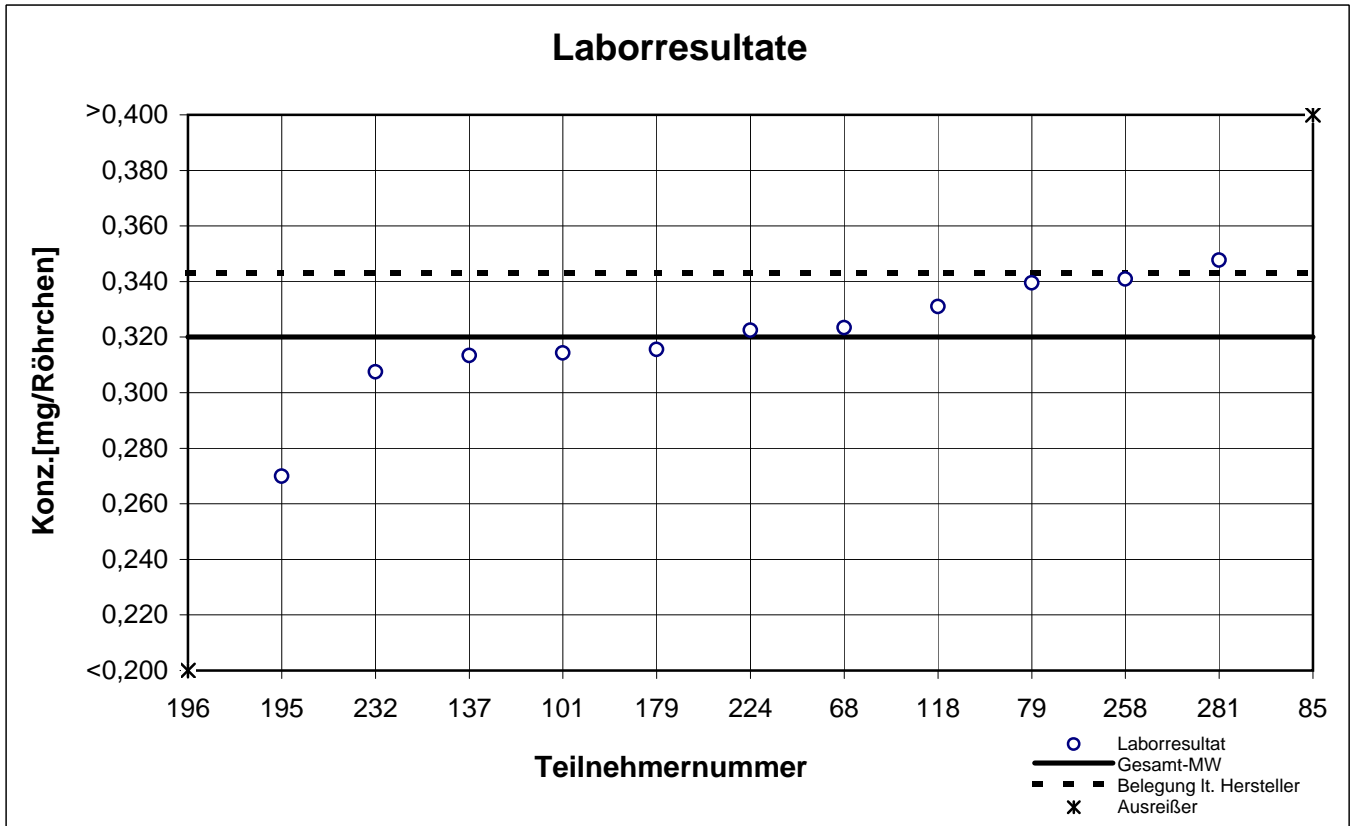
NIOSH -Probe 2

n-Oktan



NIOSH -Probe 2

o-Xylol



results NIOSH - sample 3

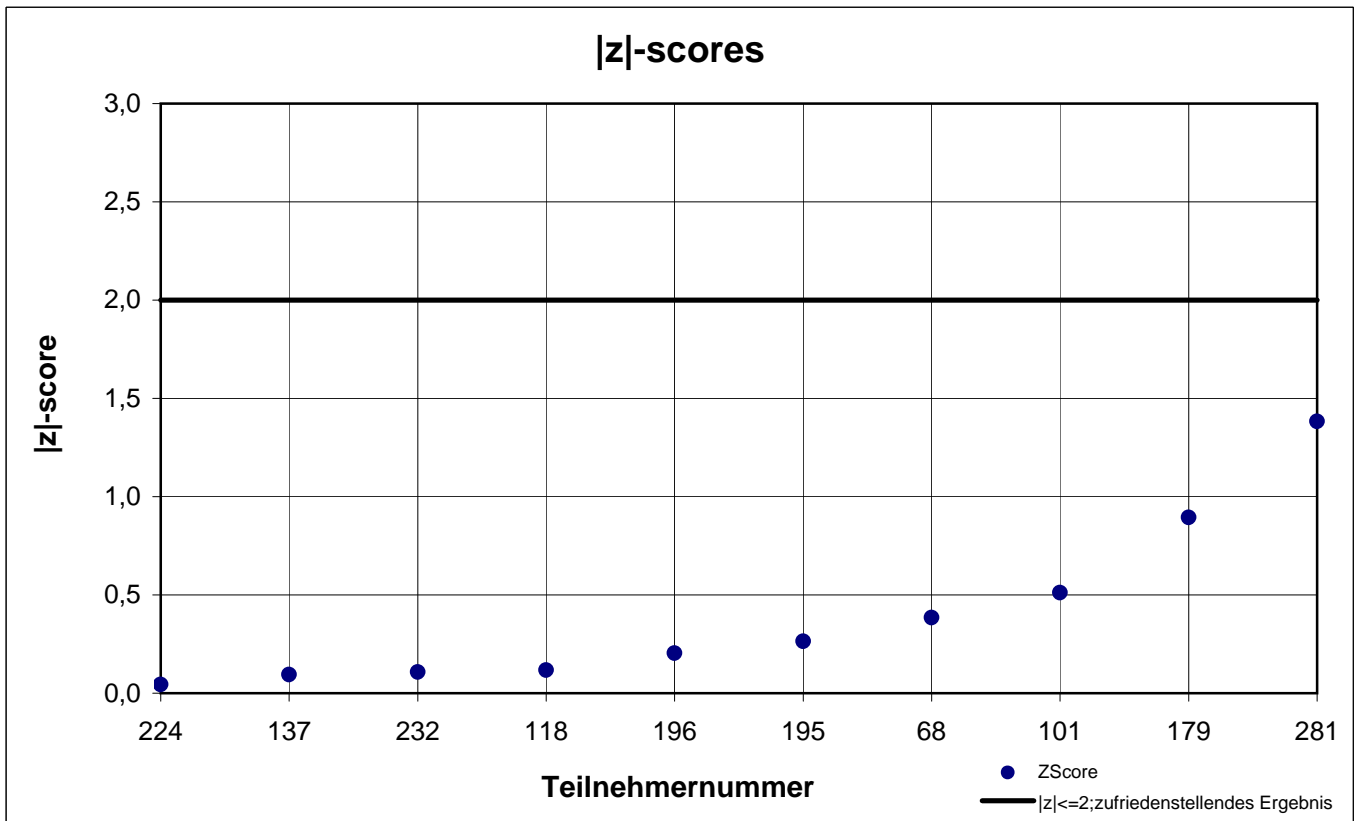
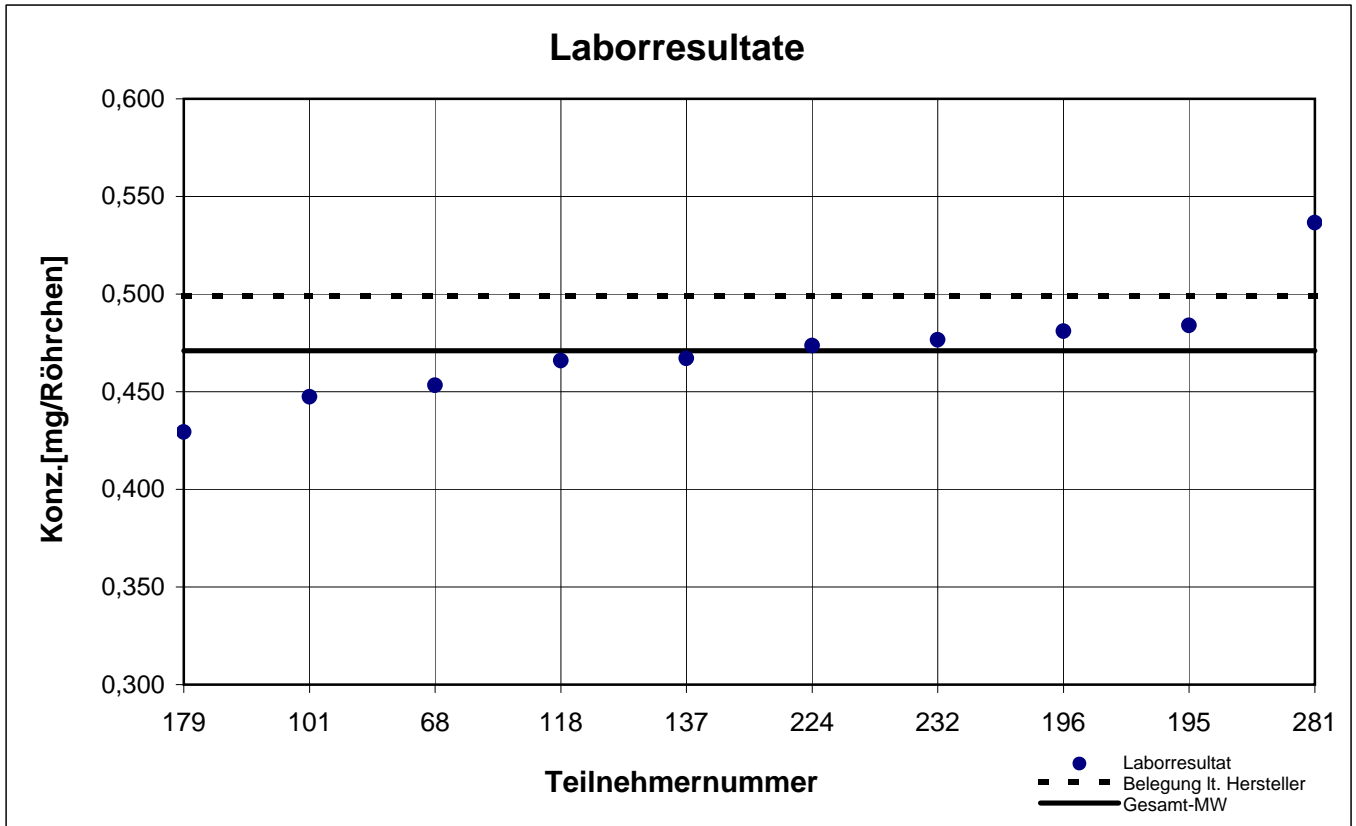
participant number	ethyl acetate		i-butylacetate		o-xylene	
	result [mg/tube]	z - score	result [mg/tube]	z - score	result [mg/tube]	z - score
68	0,453	0,4	0,785	0,0	0,128	0,2
79	k.A.	k.A.	k.A.	k.A.	0,141	1,2
85	k.A.	k.A.	k.A.	k.A.	0,201	6,0
101	0,447	0,5	0,763	0,2	0,129	0,3
118	0,466	0,1	0,783	0,0	0,114	1,0
137	0,467	0,1	0,789	0,1	0,124	0,2
179	0,429	0,9	0,678	1,3	0,114	0,9
195	0,484	0,3	0,801	0,2	0,109	1,3
196	0,481	0,2	0,823	0,5	0,129	0,3
224	0,474	0,1	0,808	0,3	0,129	0,3
232	0,477	0,1	0,805	0,3	0,127	0,1
258	k.A.	k.A.	k.A.	k.A.	0,131	0,4
281	0,537	1,4	k.A.	k.A.	0,134	0,7

 marked fields are outliers!

	ethyl acetate	i-butyl acetate	o-xylene
mean c_k [mg / tube]	0,471	0,782	0,126
standard deviation S_k [mg / tube]	0,0280	0,0430	0,0092
relative standard deviation [%]	6,02	5,47	7,35

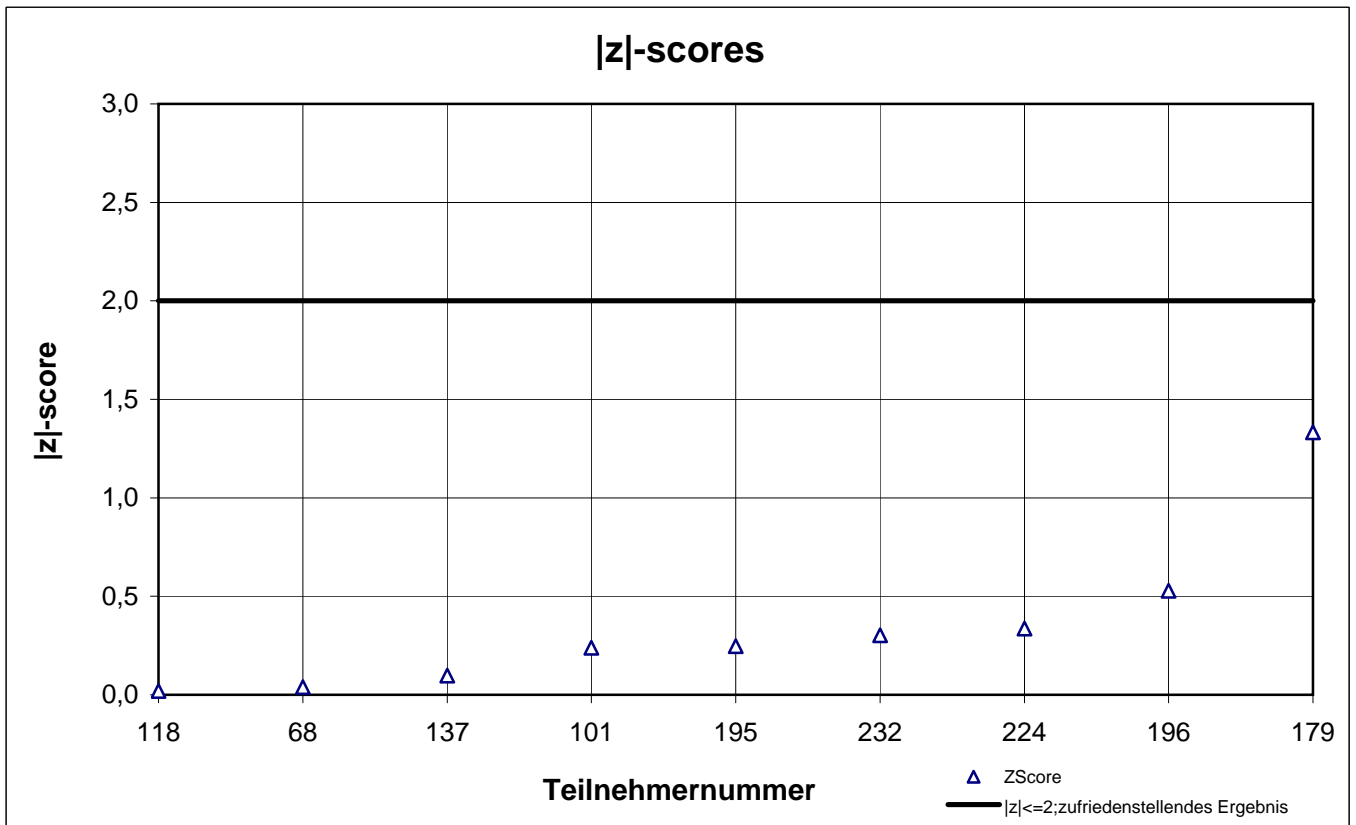
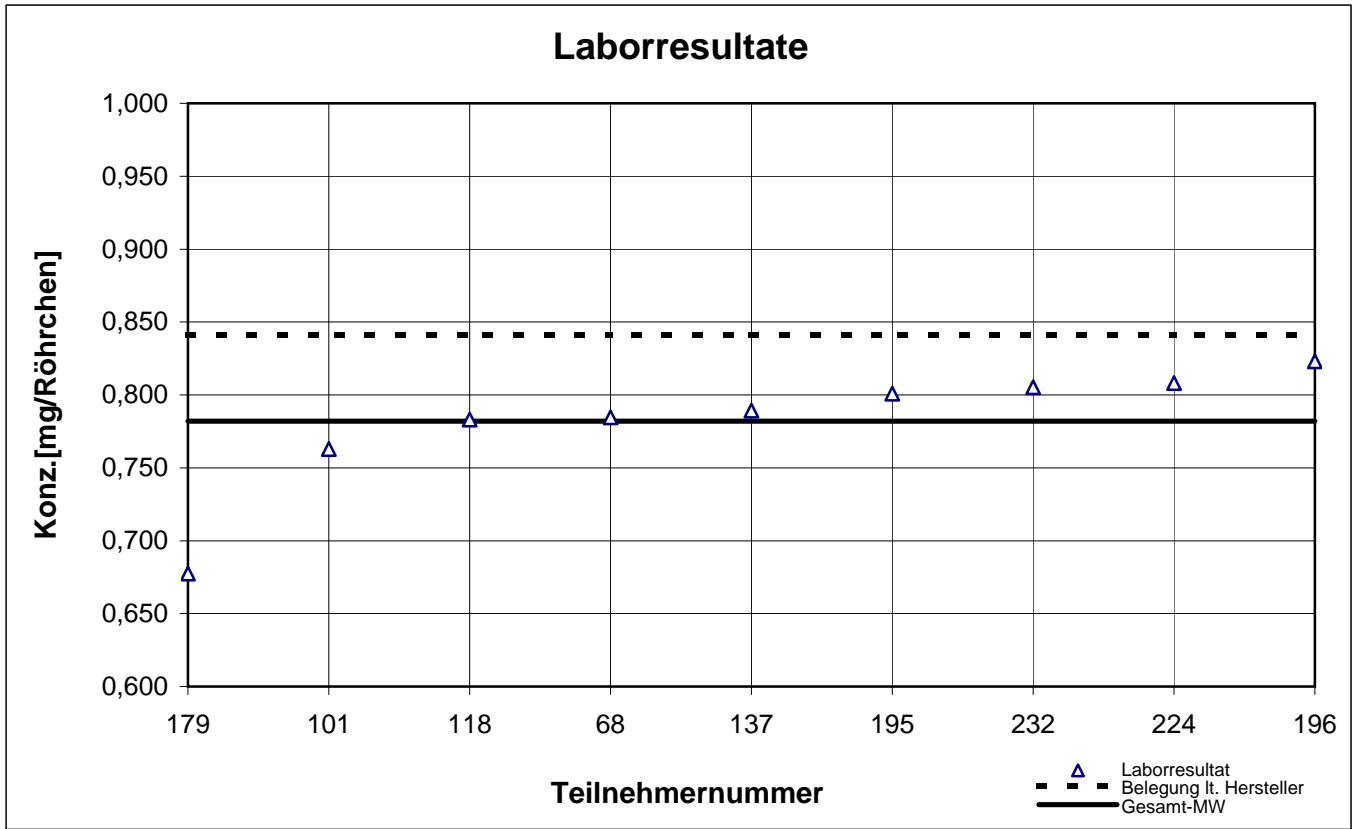
NIOSH -Probe 3

Ethylacetat



NIOSH -Probe 3

i-Butylacetat



NIOSH -Probe 3

o-Xylol

